



ESSENTRA



ELECTRICAL  
MANUFACTURING  
**SHAPING  
ESSENTIAL  
SOLUTIONS**





We work with

**9/10**

Top Consumer Electronics  
Manufacturers

— Forbes 2015



# HELPING YOUR BUSINESS WORK BETTER

## AMERICAS



Whatever your particular need, Essentra has a solution.

Working with you, we bring together the best products, ideas and distribution in one unrivalled package. Our reliable service and global capability means that we deliver – wherever, whatever, however.

## Little things make a big impact

Essentra provides the small yet vital components that help power the Electrical Manufacturing industry. And we help it move smoother, smarter and faster by manufacturing and distributing one of the world's most extensive ranges of cable management, gasketing and sealing products. You don't have to wait for shipments to cross borders to reach you. We're already here for you.

## EUROPE



We're a FTSE 250 company, with a global reach and a local understanding. Our manufacturing capabilities, experience, customer focus and global infrastructure allows us to leverage our extensive network to deliver bespoke and industry specific solutions to a global customer base. It's no wonder that so many Electrical Manufacturing customers rely on our solutions every day.

## ASIA PACIFIC



Our global reach extends to

# 33

countries across three regions, shipping to more than 75 countries

We work with over **70%** of the **top 100** largest **global manufacturers**

— Industry Week 2015

# OUR ELECTRICAL MANUFACTURING APPROACH

As a global partner and supplier to the Electrical Manufacturing market, we'll take your challenge and create a solution.

Tell us your needs and our Customer Solutions Model will identify your key priorities across a range of business areas, including product or process improvement, innovation, reducing cost and waste, and ensuring supply chain security.

## OUR CAPABILITIES

We lead the industry in product quality, continually driving productivity and creating custom and standard industry solutions. With scalable production runs and short lead times on custom solutions, we truly are your industry solution provider.

We go beyond expectations and create category-changing ingenuity and opportunity for our customers.

## FROM CONCEPT TO MARKET

Our engineers are experts at designing business critical solutions that can turn your vision into reality. From design to 3D prototypes to finished products, our complete end-to-end service ensures a unique approach is taken with every project.

## 1 DEVELOPMENT

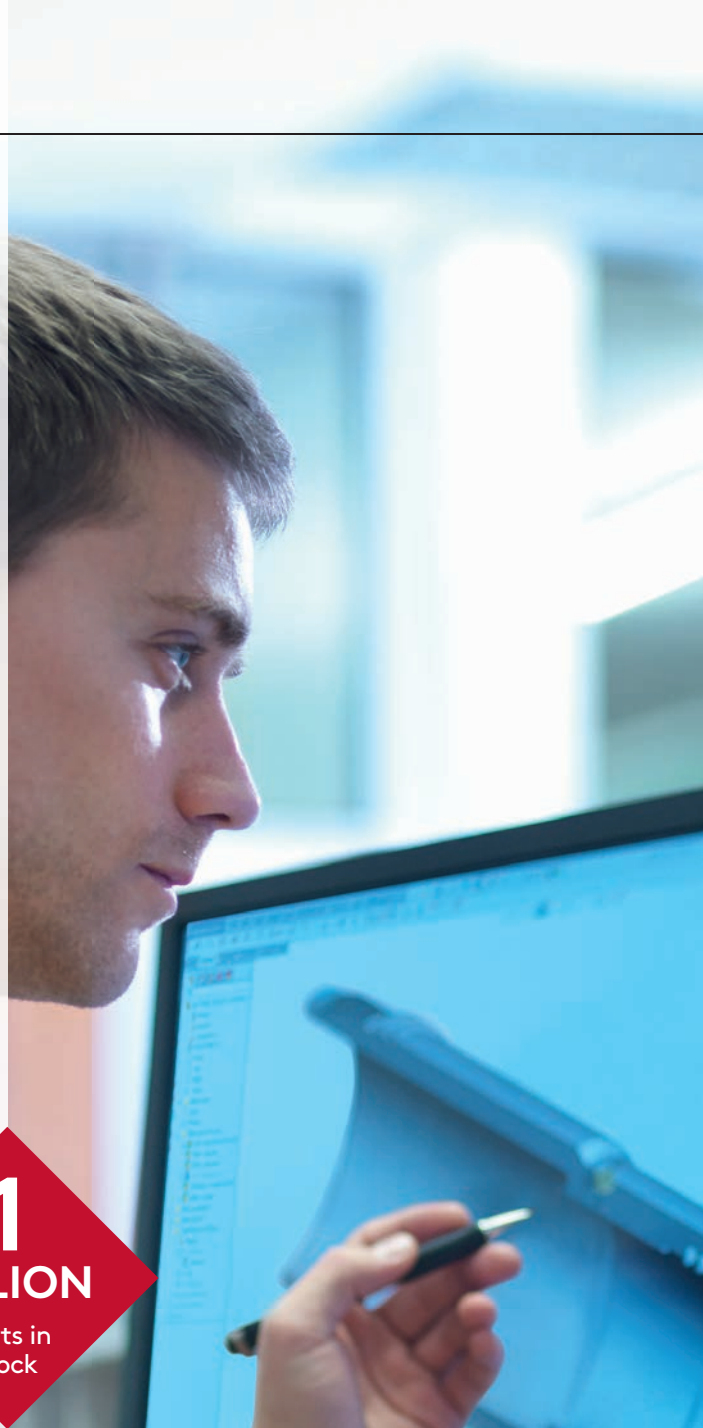
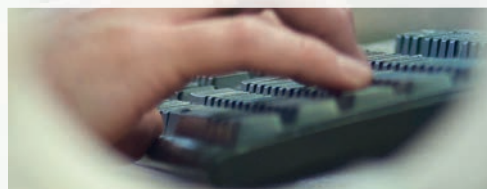
We can support you at every phase of your project, with our extensive catalogue of CAD drawings, in-depth technical support and advice on complimentary solutions. We can also save you design time and expense, with our bespoke services.

When designing a custom part we'll produce a 3D prototype for you, within a few days. An exact production part can then be manufactured to meet precise material and dimensional requirements for final testing.

**1**  
**BILLION**  
parts in stock

## 2 PRODUCTION

At Essentra we constantly monitor our production and sub-assembly processes, allowing us to strive for excellence when it comes to manufacturing quality and consistency. We continue to expand our production capacity across our global network whilst maintaining machine utilisation. Dedicated test facilities also allow us to maintain quality through design verification and validation, using push-and-pull force testing.





### 3 DISTRIBUTION

With 1 billion parts in stock, we have what you need, when you need it. Near-shore manufacturing means we can accommodate demanding lead times, getting you the parts you need right away. Our extensive range of solutions, from EMI ferrites to LED hardware, can simplify your supply chain, making your job just a little bit easier.

### 4 AFTERCARE

As a strategic partner Essentra will give you ongoing technical support, taking the time to ensure your solution is working in application as intended. We'll help to identify possible enhancements and work to provide streamlined modifications where needed.

**5**  
**R&D**  
**CENTRES**

We work to **high standards**, with the accreditation to prove it:

**ISO 9001:2008**  
**REACH**

# OUR SOLUTIONS

We know what matters to you, and we deliver: consistent quality, expert technical support, an extensive range, free samples, and fast lead times. Our components are at work throughout the global Electrical Manufacturing market. Just some examples include cable management in white goods, spacers and circuit board hardware for routers, PCB supports in printers, and fan accessories for office machinery and equipment.

## **We work with the world's top 6 Electrical Equipment Manufacturers — Forbes 2015**

Our vital and complementary solutions, and pro-active customer service, can give you the edge in producing excellence in your final product, and getting it to market fast. And if we don't have what you need within our standard range, we'll make it for you.



Manufacturing  
**56,000**  
Electrical  
Manufacturing  
products





## PCB SPACERS & SUPPORTS

---

Our PCB spacers give you a high rate of conductivity and excellent resistance to corrosion. Choices also include tough and durable steel, aluminium, brass and stainless steel. Supports include female-to-female, female-to-male and male-to-male standoffs.

## CABLE TIES & CLIPS

---

Cost effective and easy to use, available in a range of materials, sizes and colours, our cable ties work for every application. Our clips are just as varied, giving you a choice of different mounting options, with each designed to hold parts firmly in place.

## RIVETS & PANEL FASTENERS

---

Name the size, the material and the fastening method you need. Our solutions are vast, from heat resistant snap rivets, to push rivets and barbed fasteners.

## CABLE MANAGEMENT

---

Tough, durable solutions that include Igus® cables and Igus e-chains®, heat shrink tubing, conduit systems, grommets, strain relief and blanking plugs, cable glands and junction and enclosure boxes.

## SCREWS, NUTS & WASHERS

---

Find the perfect solutions for specialist, light-to heavy-duty applications. Easy to install and available in a variety of materials, including nylon, PVDF, polycarbonate, TPR, polypropylene, PEEK®, POM and HDPE.

## GASKETS & SEALS

---

A wide range of foam materials, used for environmental sealing, vibration isolation, sound dampening and shock resistance. Custom shapes, sizes and configurations are available for your specific design requirements.

## ACCESSORIES

---

With nearly 2,000 accessories, we can help you with solutions for just about any application. Just a few examples include buffers and bumpers, rotary dampers, fan filter assemblies, locks, latches, hinges and strikers.



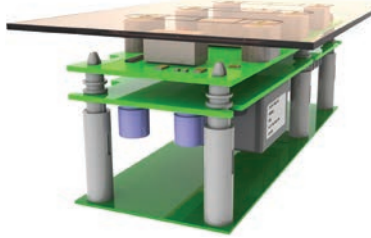
## A CLOSER LOOK

# CONSUMER APPLIANCES

Used in homes and kitchens across the world, we provide the small parts that make consumer appliances work. Whether you're producing ovens, washing machines or refrigerators we offer a broad range of components that meet and exceed the markets demanding expectations.

### TOUCH CONTROL SPACER

Perfect for induction hobs. The spring provides constant contact force between PCB mounted infrared sensors and the touch panel cover.



### DOOR BUFFER

Absorbs vibrations, protecting surfaces from contact. Available in silicone and easy to apply, our door buffers' heat resistant properties make them ideal for food-preparation appliances.



### CUPPED BASE CABLE TIE HOLDER

The dome cover offers more protection from heat, allowing it to easily cope with high temperatures. Space saving with aesthetic qualities and excellent grip.







### WIRE SADDLE



Versatile and available in a range of mounting options, our cost-effective wire saddles are easy to install, securing wires in the back of ovens and microwaves. Available in glass-filled nylon to withstand high temperatures.

### SILICONE GROMMET



Great at protecting wires from sharp edges, our grommet's silicone material can withstand high temperatures.



### SMALL APPLIANCES

Whether you're making kettles, coffee machines or toasters, we have a breadth of solutions, both custom and off the shelf, suitable for your brands.



## A CLOSER LOOK

# CONSUMER APPLIANCES

### CABLE CLAMP WITH ADHESIVE BASE

Hold cables in place by clamping and affixing with an adhesive. Ideal if you're unable to perforate the mounting panel. UL94-V0 flame resistance.



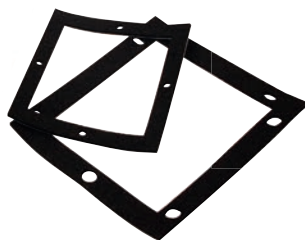
### ROTARY DAMPER BODY

Simple to install, our rotary damper controls the speed and acceleration of movement in parts such as doors or buttons. Self-contained or can be fitted as part of an assembly. Available in a range of torques and gear profiles.



### DIE-CUT GASKET

Perfect for diverting fluids to avoid contact with critical areas. Choose from a wide range of foam materials, sizes and configurations to meet your application needs. Environmental sealing, vibration isolation, sound dampening and shock-resistant solutions also available.







### P CLIP



Perfect for holding larger diameter cables, tubes and pipes, whatever your application. Simply bend the P clip open, place tubing in and refasten. Available in large range of materials. Flammability rating UL94 V2 & V0.

### CABLE GROMMET



Solves the problem of awkward spaces, without the need to feed wires through. Simply mount onto a panel and slide wires into the grommet. Works at temperatures up to 80°C.

### BARBED FASTENERS



Fast, tool-free assembly. Gives you a reliable fitting in bore holes with larger tolerances. Its barbed qualities work for blind holes or holes with or without screw threads.



## A CLOSER LOOK

# CONSUMER ELECTRONICS

For all aspects of the market, from TVs and Blu-ray players through to laptops and projectors, our extensive range of electrical components can serve you at every stage of your product development and manufacturing process.

## ARROW HEAD CABLE TIE

Simply push into your pre-drilled hole. The arrow head fixes itself onto your panel, with no need for a separate cable holder. Flexible enough to accommodate bundles before or after mounting. Available in different dimensions and with different tensile strengths.



## PEEK® SCREW

Perfect for electronics with demanding applications. Made from PEEK®, these screws give you outstanding mechanical properties and high-temperature stability. This is especially helpful for electronics used in different environments.

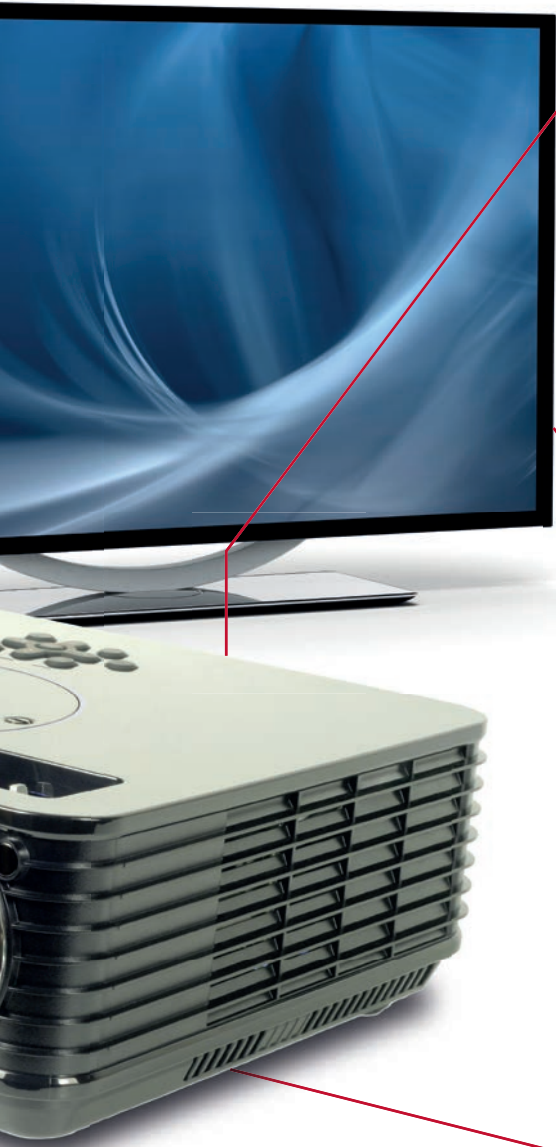


## HEAT STABILIZED/FLAME RETARDANT CABLE TIES

Make the most of the space inside the component, keeping your cables orderly and easily accessible. Our heat stabilized and flame retardant cable ties are the perfection solution, cost-effective and strong.







**BREAK-AWAY BUMPER**



Save space by breaking away the mounting tab after assembly, so that nothing extrudes inside the component. Also protects from vibration and shock. Perfect for smaller electronics, where space is limited.

**HEX SPACER**



Robust and secure, our hex spacers are made of stainless steel to protect against corrosion. Ideal for components regularly moved around. Its toughness also ensures the longevity of your finished product.

**HEAT RESISTANT SNAP RIVETS**



The heat generated by consumer electronics makes this a must-have, withstanding temperatures up to 130°C. Quicker to install than screws, our snap rivets are also ideal for awkward spaces. Aesthetically pleasing from the outside, helping the finished product look stylish.



## A CLOSER LOOK

# OFFICE MACHINERY & EQUIPMENT

With a wide selection of components for multiple applications, we are your supplier for all of the small but vital parts needed to build office machines and equipment. From printers to routers, we can help you deliver quality products that drive repeat purchases from your customers.

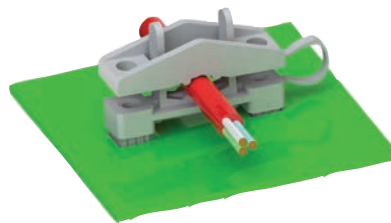
### DRILLER/CABLE CLIPS

Perfect for when cables need to be managed with a range of mount types, from snap-fit to snap-lock. Gives you the flexibility to mount in various positions with a range of lengths. Long clips can lift wires off the board to avoid hot components, while shorter clips are ideal when space is limited.



### HINGED LOCKING CLAMP

Great when you need to open and close while mounting cables or wires. Offers the same advantages of our driller/cable clips with the added benefit of providing strain relief, protecting wires and cables, and ultimately your product.



### RAPID CABLE WRAP

Organise your wires in a single bundle with a more permanent solution than standard cable ties. Our rapid cable wraps give you durable protection from wear and tear. Easy to install, you can route cables through the wrap's slits at any point.







**DOOR LATCH/STRIKERS**



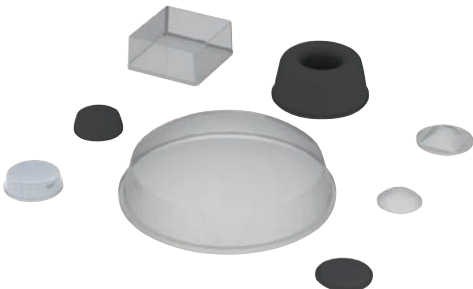
Perfect for applications with a push-open and close feature, providing a lifecycle of 50,000 operations. Withstands storage temperatures between -40° and 80°C, and continuous working temperatures between -10° and 60°C.

**FAN FILTER ASSEMBLIES**



The filter allows air to flow freely with minimum air resistance. Easy to install with simple mounting holes, so they're just as easy to remove for maintenance or replacement. Includes a finger guard, foam filter and retainer, made with high-impact plastic, meeting UL94-V0 flammability. Foam filter meets UL94HF1 smoke-generation requirements.

**STICK-ON FEET/BUFFERS**



Ideal as feet or furniture door buffers for most smooth and dry surfaces. Extremely easy to apply with self-adhesive backing.



---

**ESSENTRA**

**LET'S TALK**

For more information  
contact your Account Manager today.